



NB ZODIAK

£64,950.00



ADDITIONAL INFORMATION

Style	Traditional
Berth	2
Length	

NB Zodiac 57ft /17.3m

BSS to October 2025

HULL

Built with an original thickness of 10/6/5/4 mm. The vendor declares it was last re blacked in 2020. She has an approx. 66 gal fuel tank & 110 gal s/steel water tank. Outside are timber-topped 'taff rail' seats, Stirrup steps fore & aft, Brass mushroom vents & fairleads Navigation lights.

She is painted with a grey roof has blue sides and cream coach lines with Gold-coloured top-hopper windows and portholes.

Height to Cabin Centre 6ft 7" (2m)

FIT OUT:

Foam insulation with Ash T&G to the roof and rear top sides and deck head and ash panelled lower sides and in the saloon and galley. Ash strip flooring throughout with Solid ash fitted

E&OE



furniture with opaque glass doors.

SALOON (13ft 2"/4m):

Entering from the front doors and down a step is a Morso solid-fuel stove in tiled surround opposite is a counter-height corner cupboard plus open bookcase. To one side is a shallow under-gunwale TV cabinet with large flat-screen TV with Freesat & DVD/CD player & storage shelves. Towards the galley are a set of side doors. On the opposite side there is a folding table hung on the wall, the rest of the area is open allowing for your own choice of free standing furniture. The area is connected to the galley by a breakfast bar with two high stools.

GALLEY (11ft2"/3.4m):

The Walk-through galley has two mirrored L shaped areas it has a solid black/blue granite tops with ash cupboards under with a slide-out larder shelves & carousel. To one side is a S/steel Belfast sink + cold water filter to the other a large New World s/steel gas oven & grill with separate matching 4-burner hob. There is a built in 240V fridge with large ice compartment, above is a glazed wall cupboard. Over the breakfast bar is a wall shelf, whilst after the cooker are another set of external side-doors . There is also a Candy washing machine (in engine room).

BATHROOM (7ft /2.13m):

Opaque glazed door leads in to a side cabin. There is a white tiled shower cubicle with glazed door, beside is a set of deep open shelves with cupboard under. Opposite is a Vetus macerator toilet next to a white ceramic circular basin set in long green glass top with glazed opaque cupboard under and mirrored bulkhead over, under the porthole is a towel radiator.

BEDROOM (8ft 9"/2.65m):

The Bedroom is access via a glazed door there is a fixed double which is extended to 4ft 8" at either end is a full height slimline wardrobe, whilst overhead are 4 lockers and a porthole on either side for light and ventilation. There is partial bulkhead and a curtain to separate the engine room area.

ENGINE ROOM (4ft 2"/ 1.25m)& ELECTRICS :

Steps lead out of the boat and over the engine, there is a Isuzu 42HP diesel engine with PRM150



gearbox, it has twin 80A alternators, with a Victron 1.2Kw/50A inverter/charger and a 240V Shore connection with Galvanic isolator. There is also a Dometic 3.5Kw engine-run AC generator along with 1 starter, 4 domestic & 1 bow-thruster battery, with a Battery management system. There are 2 x 80W solar panels and a Vetus 55Kgf electric bow thruster.

Heating on the boat is provided by a Webasto diesel heating unit with 4 radiators and a S/F stove.

OTHER EQUIPMENT:

Fire extinguishers & blankets. Deck & mooring equipment, anchor, Hose .

Category: [Sold](#)

PRODUCT DESCRIPTION

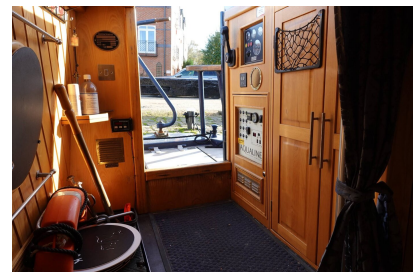
57ft/17.3m Trad Style 2007
Hull and F/O by Aqualine
2 Berth

Diesel heating with Rads & S/F Stove

£64,950

GALLERY IMAGES





E&OE

