



NB LADY VIOLET

£59,950.00



ADDITIONAL INFORMATION

Berth	2/6
Length	50ft - 60ft
Style	Traditional

HULL:

A well-loved boat that has been in the same family from new, Lady Violet can accommodate up to 6 people and has a great layout for live-aboards and cruisers alike. The interior is spacious and homely and the Russel Newbery engine provides the heartbeat to a very appealing vessel complete with covered well deck, a well-appointed galley and boatman's cabin. She was repainted in 2019 and last blacked in August 2024.

Height to Cabin Centre 6ft 5" (5ft 7" in the boatman's cabin)

FIT OUT:

The ceiling is oak finished ply, the upper sides are pine T&G and the lower sides are mahogany/mahogany finished ply.

WELL DECK (4ft 7") & SALOON (9ft 7"):

The covered well deck features a drop down table and side lockers/seating. Glazed doors lead into the saloon with built in seating which serves as a comfortable seating and dining area. The table is mounted on Desmo legs, meaning that the table can be readily taken down if required



and converted to an additional double berth. There is a Morso Squirrel multi-fuel stove for heating, an Alpine radio and a 19" Linsar TV with DVD.

GALLEY (9ft 3"):

The galley is adjacent and open to the saloon. It features all of the home facilities, namely gas cooking, a 12 v fridge, resin sink and plenty of storage cupboards.

Water heating on board is provided by the calorifier with immersion heater, the boiler or the engine. Cabin heating is provided by the Alde Comfort (last serviced March 2024), supplying 3 radiators and fin rad.

BEDROOM (8ft 2"):

The bedroom has a fixed double bed with shelves and reading lights over. There are full length cupboards with sliding doors at the base of the bed, and a radiator and additional cupboards on the opposite side beneath the gunwhales.

BATHROOM (6ft 1"):

Features a shower with curtain, a hand basin over vanity beneath and wall-mounted cupboard and mirror above. The toilet is a Mansfield Traveller pump out with an approximately 180 litre holding tank.

ENGINE ROOM (5ft11") & SYSTEMS:

The boat is powered by a Russel Newbery DM2 diesel, producing 22hp at 1200rpm and controlled by a single lever Morse control. The gearbox is a PRM 160.

There is a Sterling 1.6kw inverter and a landline connection, 1 starter and 3 x 120Ah leisure batteries. The water tank capacity is 120 gallons (545 litres).

BOATMAN'S CABIN (8FT 4"):

This cabin has a permanent single bench/single berth which has a fold down panel to convert it to a double berth. A Heron range provides heat.



OTHER EQUIPMENT:

2 x 13kg gas cylinders, Anchor, fenders and mooring equipment.

Category: [For Sale](#)

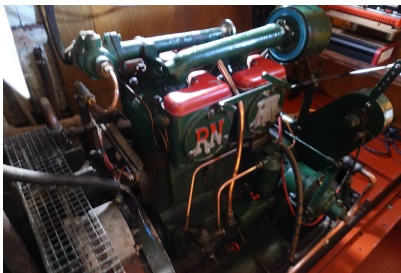
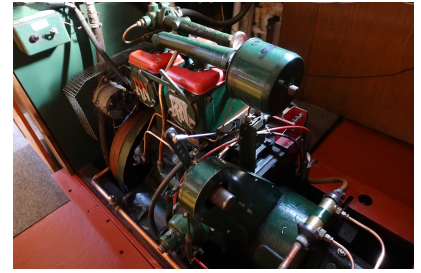
PRODUCT DESCRIPTION

60ft /18.3m Trad Style 1991
Hull by Colecraft
F/O by Owner
Russel Newbery DM2 Engine
2 + 4 Berth

£59,950

GALLERY IMAGES

E&OE



E&OE



E&OE